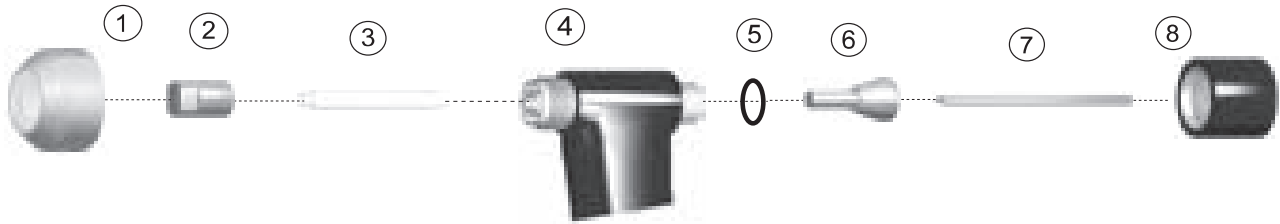


# REPLACEMENT PARTS SUITABLE FOR THERMAL DYNAMICS®

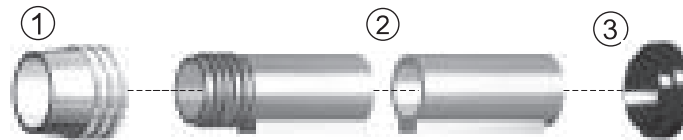
## PWH/M 2A WELDING TORCH



Item	Part No.	Ref. No.	Description	Std. Pkg	Item	Part No.	Ref. No.	Description	Std. Pkg.
1.	T-1482	8-2071	Shield Cup	5	T-1037	8-2028		Torch Head, 90°	1
2.	T-1483	8-2023	Tip, .046, 35A	10	T-1493	8-2097		Torch Head, Machine	1
	T-1485	8-2025	Tip, .081, 75A	10	5.	T-1494	8-2035	O-Ring	10
	T-1486	8-2079	Tip, Long, .031	10	6.	T-1495	8-2039	Collet	1
	T-1487	8-2080	Tip, Long, .046	10	T-0766	8-2041		Collet (.040)	1
	T-1488	8-2082	Tip, Long, .062	10	7.	T-1496	8-2033	Electrode	5
	T-1489	8-2083	Tip, Long, .081	10	T-0768	8-2044		Electrode (.040), Std.	10
3.	T-1490	8-2040	Gas Distributor	1	8.	T-1497	8-2032	Back Cap	1
4.	T-1491	8-2036	Gasket	5	T-0765	8-2030		Back Cap, Extended	1
	T-1492	8-2027	Torch Head, 70°	1					

## ACCESSORIES

### Machine Torch



Item	Part No.	Ref. No.	Description	Std. Pkg	Item	Part No.	Ref. No.	Description	Std. Pkg.
1.	T-0157	8-4018*	Nut	1	NS T-0774	2-2840		Machine Torch with 12.5' Leads without QD	1
2.	T-0159	8-5005	Mounting Tube	1	NS T-1532	9-2105		Negative Lead, Green, 12-1/2'	1
3.	T-0161	8-4204	Bushing	1	NS T-1533	8-1494		Negative Lead, Green, 25'	1
NS	T-1526	4-2539	Leads 12-1/2'	1	NS T-1534	9-2107		Positive Lead, Red 12-1/2'	1
NS	T-1527	4-2585	Leads 25'	1	NS T-1535	8-1495		Positive Lead, Red 25'	1
NS	T-1528	2-2443	Hand Torch 70° with 12-1/2' Leads	1	NS T-1536	8-1074		Plasma Hose 12 1/2'	1
NS	T-4106	2-2100	Hand Torch 70° with 12.5' Leads & QD	1	NS T-1537	8-1496		Plasma Hose 25'	1
NS	T-1529	2-2505	Hand Torch 70° with 25' Leads	1	NS T-1520	8-1075		Shield Hose 12 1/2'	1
NS	T-0772	2-2444	Hand Torch 90° with Leads 12.5'	1	NS T-1521	8-1497		Shield Hose 25'	1
NS	T-0775	2-2506	Hand Torch 90° with 25' Leads	1	NS T-1446	8-3138		Sleeving 12 1/2'	1
NS	T-1530	2-2480	Machine Torch with 12-1/2' Leads	1	NS T-1447	8-3139		Sleeving 25'	1
NS	T-1531	2-2594	Machine Torch with Leads 25'	1					