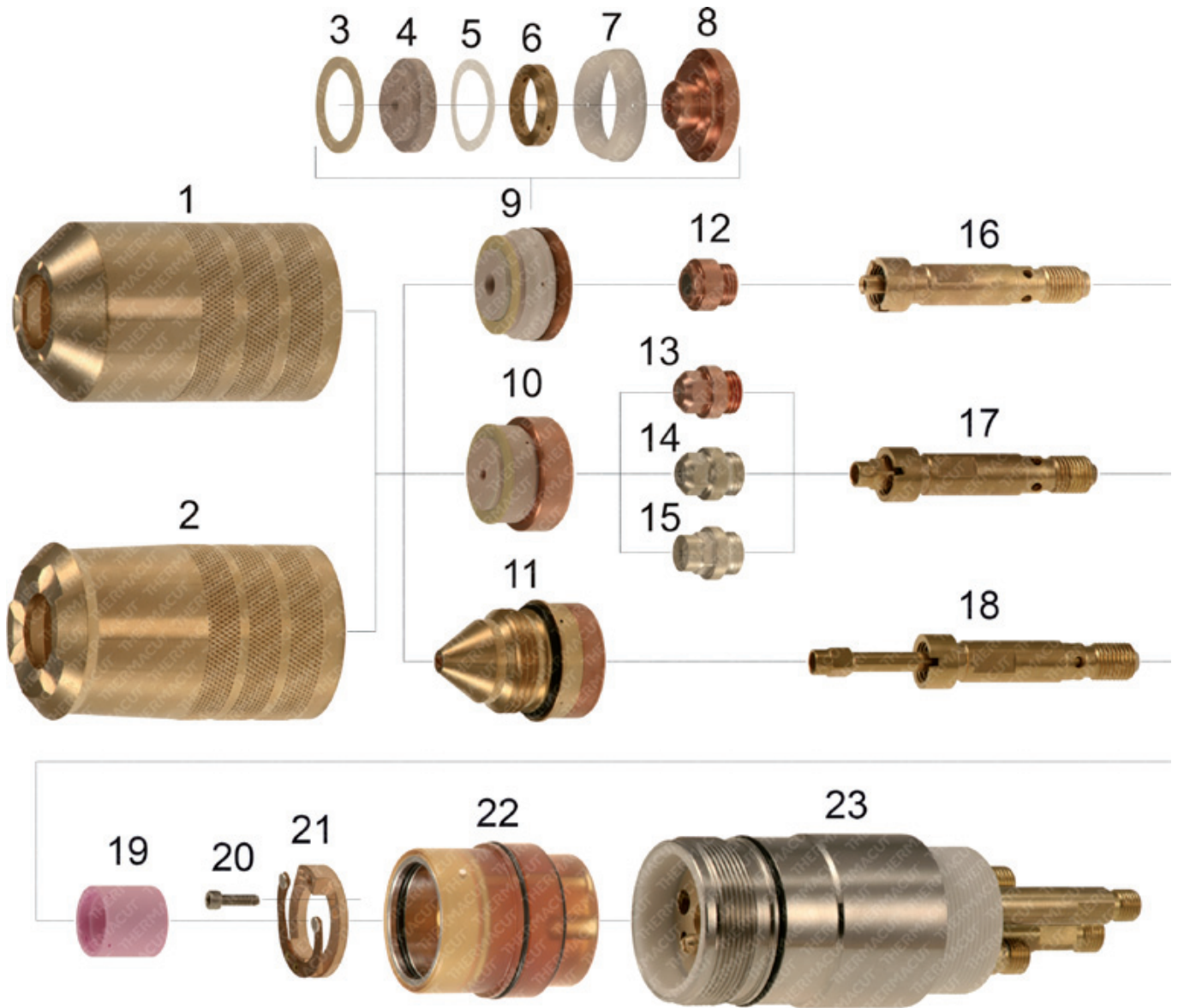


# REPLACEMENT PARTS SUITABLE FOR ESAB®/L-TEC®

PT-15®, PT-15XL®



# REPLACEMENT PARTS SUITABLE FOR ESAB®/L-TEC®

## PT-15®, PT-15XL®

Item	Part No.	Ref. No.	Description	Std. Pkg.	Item	Part No.	Ref. No.	Description	Std. Pkg.
1.	T-0355	20758	Nozzle Retaining Cup, O <sub>2</sub>	1	T-1715	35662	Nozzle 300A, O <sub>2</sub>	1	
2.	T-1246	20759	Nozzle Retaining Cup, N <sub>2</sub> /H <sub>35</sub>	1	11. T-10209	21962	Nozzle Bevel 300A, O <sub>2</sub>	1	
NS	T-0356	996230	Retaining Cup	1	T-10329	21963	Nozzle 260-300A, CCW	1	
3.	T-0354	996628	Gasket	1	12. T-0328	600236	Electrode 250-1000A, N <sub>2</sub>	5	
4.	T-0350	2075693	Insulator, 0,140"	1	13. T-0329	20763	Electrode 260A, O <sub>2</sub>	5	
	T-0351	2075617	Insulator, 0,180"	1	14. T-4900	20763-AG	Electrode 260A, O <sub>2</sub> , SilverEX®	5	
	T-0352	2075606	Insulator, 0,225"	1	15. T-4906	35666XL-AG	Electrode 125-340A, O <sub>2</sub> , SilverEX®	5	
	T-0353	2075607	Insulator, 0,260"	1	16. T-0326	2075343	Electrode Holder	1	
	T-1604	2075588	Insulator, 0,500"	1	17. T-0327	20398	Electrode Holder	1	
NS	T-10683	20409-UR	Insulator	1	18. T-1253	34084	Electrode Holder	1	
5.	T-0349	996619	Spacer	1	19. T-0322	948142	Swirl Ring, 4 Hole, CW	1	
6.	T-0346	2075584	Swirl Ring, 4 Hole, CW	1	T-0320	2075341	Swirl Ring, 4 Hole, CW, N <sub>2</sub>	1	
	PT-10567	2075616	Swirl Ring, 4 Hole, CCW	1	T-0323	948143	Swirl Ring, 4 Hole, CCW	1	
7.	T-0348	996618	Centering Sleeve	1	T-0321	2075360	Swirl Ring, 4 Hole, CCW, N <sub>2</sub>	1	
8.	T-0345	19810	Nozzle Base 875-1000A	1	T-1869	1361201	Swirl Ring, 8 Hole, CW	1	
	T-0342	2075608	Nozzle Base 400A	1	T-2019	35660	Swirl Ring, 8 Hole, CW	1	
	T-0343	2075609	Nozzle Base 600A	1	T-11659	35661	Swirl Ring, 8 Hole, CCW	1	
	T-0344	2075610	Nozzle Base 750A	1	T-0324	2075586	Swirl Ring, 8 Hole, CCW	1	
9.	T-0332	2075611	Nozzle 400A, N <sub>2</sub>	1	20. T-1247	996242	Locating Pin	1	
	T-1966	2075612	Nozzle 600A, N <sub>2</sub>	1	21. T-1248*	21940 OEM	Contact Ring	1	
	T-1968	2075613	Nozzle 750A, N <sub>2</sub>	1	22. T-0319	20755	Insulator	1	
	T-0333	2075614	Nozzle 400A, N <sub>2</sub> , CCW	1	NS T-1373	20403	Wire Insulator	1	
	T-9645	2075615	Nozzle 600A, N <sub>2</sub> , CCW	1	23. T-0318	20754	Torch Body, Machine	1	
	T-9644	2075692	Nozzle 250A, CCW	1	NS T-10682**	20408-UR	H.F. Connector	1	
	T-10321	20751-UR	Nozzle 260A, O <sub>2</sub>	1	NS T-10476**	17504-UR	Adaptor, Water-Out	1	
	T-0338	2075587	Nozzle 875-1000A, H <sub>35</sub>	1	NS T-10474**	17501-UR	Adaptor, Water Injection	1	
	T-1976	2075691	Nozzle 250A, N <sub>2</sub>	1	NS T-10475**	17503-UR	Adaptor, Water-In	1	
	T-3584	2075611-2	Nozzle 400A, N <sub>2</sub>	1	NS KT-1159	000128	PT-15XL® Cable Leads, 1,8m (6')	1	
10.	T-1716	35664	Nozzle 340A, O <sub>2</sub>	1	NS KT-1118	K.PT-15XL.3M.K	PT-15XL® Cable Leads, 3m (10')	1	
	T-0339	20751	Nozzle 260A, O <sub>2</sub>	1	NS KT-1160	000124	PT-15XL® Cable Leads, 5,1m (17')	1	
	T-0340	20920	Nozzle 260A, O <sub>2</sub> , CCW	1	NS KT-1158	000129	PT-15XL® Cable Leads, 6,1m (20')	1	
	T-10322**	20920-UR	Nozzle 260A, O <sub>2</sub> , CCW	1	NS KT-1105	000328	PT-15XL® Cable Leads, 7,6m (25')	1	

\*\* A UNIQUE DESIGN WHICH ENHANCES PERFORMANCE AND DIFFERS FROM OEM DESIGNS

CCW Counter Clock Wise gas swirling, use of CCW parts will make cut angle on the opposite side, than with standard Counter Wise (CW) swirling parts.

ESAB®, PT-15®, PT-15XL® are the Registered Trademarks of ESAB. L-TEC® is the Registered Trademark of L-TEC® Cutting Systems.

**Last update of this page: 21/04/2015. See Revision history for details.**