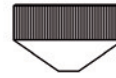


REPLACEMENT PARTS SUITABLE FOR MITSUBISHI®



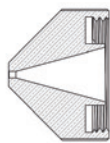
HG 12.500-504



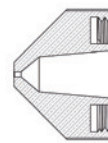
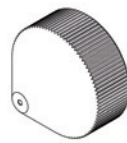
HG 12.505

Double copper inserts

Part No.	Ref. No.	Description	Std. Pkg.	Part No.	Ref. No.	Description	Std. Pkg.
HG12.500	W390	Double nozzle insert 4-holes	10 pcs	HG12.503	W388	Double nozzle insert 16-holes	10 pcs
HG12.528	W270-6	Double nozzle insert 6-holes	10 pcs	HG12.529	W389	Double nozzle insert 20-holes	10 pcs
HG12.501	W270	Double nozzle insert 8-holes	10 pcs	HG12.504	W515	Double nozzle insert 24-holes	10 pcs
HG12.502	W387	Double nozzle insert 12-holes	10 pcs	HG12.505	W269	Shield cup	10 pcs



W1628



W1627B

Part No.	Ref. No.	Description	Std. Pkg.	Part No.	Ref. No.	Description	Std. Pkg.
HG12.540	W1626	Nozzle 1,0 mm	10 pcs	HG12.546	W1630	Nozzle 2,5 mm	10 pcs
HG12.560	W1626B	Nozzle 1,0 mm, Low Pressure	10 pcs	HG12.564	W1630B	Nozzle 2,5 mm, Low Pressure	10 pcs
HG12.541	W1627	Nozzle 1,2 mm	10 pcs	HG12.550	W1664	Nozzle 3,0 mm	10 pcs
HG12.542	W1627B	Nozzle 1,2 mm, Low Pressure	10 pcs	HG12.565	W1664B	Nozzle 3,0 mm, Low Pressure	10 pcs
HG12.543	W1628	Nozzle 1,5 mm	10 pcs	HG12.551	W1665	Nozzle 3,5 mm	10 pcs
HG12.561	W1628B	Nozzle 1,5 mm, Low Pressure	10 pcs	HG12.566	W1665B	Nozzle 3,5 mm, Low Pressure	10 pcs
HG12.544	W1661	Nozzle 1,7 mm	10 pcs	HG12.552	W1666	Nozzle 4,0 mm	10 pcs
HG12.562	W1661B	Nozzle 1,7 mm, Low Pressure	10 pcs	HG12.567	W1666B	Nozzle 4,0 mm, Low Pressure	10 pcs
HG12.545	W1629	Nozzle 2,0 mm	10 pcs	HG12.553	W1663	Nozzle 5,0 mm	10 pcs
HG12.563	W1629B	Nozzle 2,0 mm, Low Pressure	10 pcs				



HG 12.506-522



HG 12.530



HG 12.511

Part No.	Ref. No.	Description	Std. Pkg.	Part No.	Ref. No.	Description	Std. Pkg.
HG12.506	HG12.506	Nozzle 1,0 mm	10 pcs	HG12.522	W268-4.0	Nozzle 4,0 mm	10 pcs
HG12.507	W266	Nozzle 1,5 mm	10 pcs	HG12.532	71800016A0	Nozzle 1,0 mm	10 pcs
HG12.508	W267	Nozzle 2,0 mm	10 pcs	HG12.520	W777	Nozzle 1,2 mm	10 pcs
HG12.509	W776	Nozzle 2,5 mm	10 pcs	HG12.530	HG12.530	Nozzle nut short (15mm)	1 pc
HG12.510	W268	Nozzle 3,0 mm	10 pcs	HG12.511	W263	Nozzle nut long (18mm)	1 pc
HG12.521	W268-3.5	Nozzle 3,5 mm	10 pcs				

MITSUBISHI® is the Registered Trademark of MITSUBISHI CORPORATION

Last update of this page: 08/10/2014. See Revision history for details.

THERMACUT®
THE CUTTING COMPANY

WWW.THERMACUT.CZ
TEL.: +420 556 423 418
SALES@THERMACUT.CZ

WWW.THERMACUT.DE
TEL.: +49 (0) 27 39 40 33 0
INFO@THERMACUT.DE

WWW.THERMACUT.COM
TEL.: 1-603-542-6715
CUSTOMERSERVICE@THERMACUT.COM

THERMACUT IS IN NO WAY AFFILIATED WITH THE ABOVE-NAMED MANUFACTURERS. REFERENCES TO THE ABOVE-NAMED MACHINES, TORCHES, CONSUMABLES AND REFERENCE NUMBERS ARE FOR CONVENIENCE ONLY. MOST THERMACUT PARTS ARE MADE FOR OR BY AN IBG COMPANY. PARTS INDICATED WITH A * ARE ORIGINAL PARTS MANUFACTURED BY THE ABOVE NAMED MANUFACTURER AND ARE BEING RESOLD BY THERMACUT. THERMACUT RESERVES THE RIGHT TO SUBSTITUTE OEM PARTS IN PLACE OF THERMACUT PARTS. VALID FROM MAY 2015 • PREVIOUS VERSION IS NO LONGER VALID. • © COPYRIGHT 2015 BY THERMACUT® CZECH REPUBLIC. ALL RIGHTS RESERVED.

REPLACEMENT PARTS SUITABLE FOR MITSUBISHI®

LENSES SUITABLE FOR MITSUBISHI®

Part No.	Ref. No.	Description	Std. Pkg.	Part No.	Ref. No.	Description	Std. Pkg.
HG15.015/H	W500	5,00" ZnSe Plano-convex lens High pressure lens (29bar), 38,1mm Effective focal length: 127,0mm Edge thickness: 7,6 mm AR/AR for 10,6um (absorption <0.20%)	1 pc	HG15.029/H	HG15.029/H	5,00" ZnSe Plano-convex lens High pressure lens (19bar), 50,8mm Effective focal length: 127,0mm Edge thickness: 7,87 mm AR/AR for 10,6um (absorption <0.20%)	1 pc
HG15.024/H	W505	5,00" ZnSe Plano-convex lens High pressure lens (33bar), 38,1mm Effective focal length: 127,0mm Edge thickness: 7,87 mm AR/AR for 10,6um (absorption <0.20%)	1 pc	HG15.002/H	W813	5,00" ZnSe Plano-convex lens High pressure lens (28bar), 50,8mm Effective focal length: 127,0mm Edge thickness: 9,7 mm AR/AR for 10,6um (absorption <0.24%)	1 pc
HG15.028/H	W510	5,00" ZnSe Plano-convex lens High pressure lens (19bar), 50,8mm Effective focal length: 190,5mm Edge thickness: 7,87 mm AR/AR for 10,6um (absorption <0.20%)	1 pc	HG15.029/HU	W505	5,00" ZnSe Plan.-con. - ULTRA LOW High pressure lens (19bar), 50,8mm Effective focal length: 127,0mm Edge thickness: 7,87 mm AR/AR for 10,6um (absorption <0.15%)	1 pc
HG15.016/H	HG15.016/H	7,50" ZnSe Plano-convex lens High pressure lens (29bar), 38,1mm Effective focal length: 190,5mm Edge thickness: 7,6 mm AR/AR for 10,6um (absorption <0.20%)	1 pc	HG15.002/HU	W813	5,00" ZnSe Plan.-con. - ULTRA LOW High pressure lens (19bar), 50,8mm Effective focal length: 127,0mm Edge thickness: 9,7 mm AR/AR for 10,6um (absorption <0.15%)	1 pc
HG15.003/H	W015	7,50" ZnSe Plano-convex lens High pressure lens (29bar), 50,8mm Effective focal length: 190,5mm Edge thickness: 9,7 mm AR/AR for 10,6um (absorption <0.24%)	1 pc	HG15.028/HU	W510UL	7,50" ZnSe Plan.-con. - ULTRA LOW High pressure lens (19bar), 50,8mm Effective focal length: 190,5mm Edge thickness: 7,87 mm AR/AR for 10,6um (absorption <0.15%)	1 pc
HG15.015/HU	W500	5,00" ZnSe Plan.-con. - ULTRA LOW High pressure lens (29bar), 38,1mm Effective focal length: 127,0mm Edge thickness: 7,6 mm AR/AR for 10,6um (absorption <0.15%)	1 pc	HG15.003/HU	W015UL	7,50" ZnSe Plan.-con. - ULTRA LOW High pressure lens (28bar), 50,8mm Effective focal length: 190,5mm Edge thickness: 9,7 mm AR/AR for 10,6um (absorption <0.15%)	1 pc

ACCESSORIES SUITABLE FOR MITSUBISHI®

Part No.	Ref. No.	Description	Std. Pkg.
HG10.174	HG10.174	Polish for laser optics, 100ml	1 pc
HG10.173	HG10.173	Lens cleaning paper from Tiffen, sheet size 70x115mm	50pcs
HG15.136	HG15.136	Latex gloves	100pcs
HG15.138	HG15.138	EM-080 general purpose cleaning concentrate, 500ml	1 pc
HG15.099	HG15.099	Cleaning holder (PTFE) for lenses (to use on both sides), 38,1mm or 50,8mm	1 pc

PolyTetraFluoroEthylene is a fluorocarbon-based polymer and is commonly abbreviated PTFE. The Teflon® brand of PTFE is manufactured only by DuPont and is not sold by Thermacut. Thermacut purchases other brands of PTFE from various high quality manufacturers.

MITSUBISHI® is the Registered Trademark of MITSUBISHI CORPORATION

Last update of this page: 17/04/2014. See Revision history for details.

THERMACUT®
THE CUTTING COMPANY

WWW.THERMACUT.CZ
TEL.: +420.556.423.418
SALES@THERMACUT.CZ

WWW.THERMACUT.DE
TEL.: +49 (0) 27 39 40 33 0
INFO@THERMACUT.DE

WWW.THERMACUT.COM
TEL.: 1-603-542-6715
CUSTOMERSERVICE@THERMACUT.COM

THERMACUT IS IN NO WAY AFFILIATED WITH THE ABOVE-NAMED MANUFACTURERS. REFERENCES TO THE ABOVE-NAMED MACHINES, TORCHES, CONSUMABLES AND REFERENCE NUMBERS ARE FOR CONVENIENCE ONLY. MOST THERMACUT PARTS ARE MADE FOR OR BY AN IBG COMPANY. PARTS INDICATED WITH A * ARE ORIGINAL PARTS MANUFACTURED BY THE ABOVE NAMED MANUFACTURER AND ARE BEING RESOLD BY THERMACUT. THERMACUT RESERVES THE RIGHT TO SUBSTITUTE OEM PARTS IN PLACE OF THERMACUT PARTS. VALID FROM MAY 2015 • PREVIOUS VERSION IS NO LONGER VALID. • © COPYRIGHT 2015 BY THERMACUT® CZECH REPUBLIC. ALL RIGHTS RESERVED.