

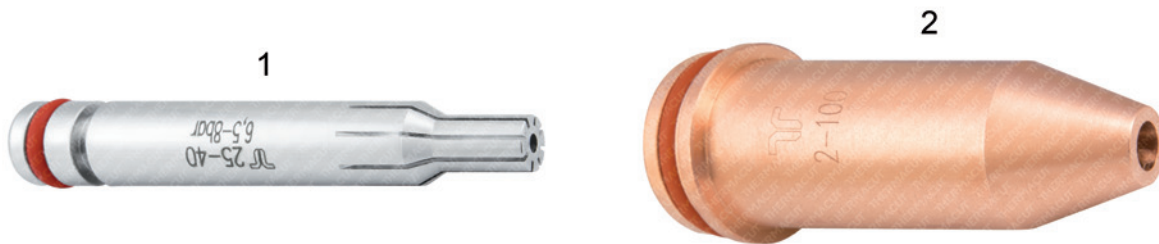
REPLACEMENT PARTS SUITABLE FOR MESSER® MODEL

VADURA® 9215A

Description: high-speed "quick change" two piece nozzles for machine cutting.

Gases: Acetylene.

Suitable for MS 932™ torch.



Item	Part No.	Ref. No.	Description, plate thickness	Packing
1.	A-1370	716.16563	Cutting Nozzle 10 - 25 mm	5pcs
	A-1362	716.16564	Cutting Nozzle 25 - 40 mm	5pcs
	A-1371	716.16565	Cutting Nozzle 40 - 60 mm	5pcs
	A-1372	716.16566	Cutting Nozzle 60 - 100 mm	5pcs
2.	A-1361	716.16550	Heating Nozzle 3 - 100 mm	1pc

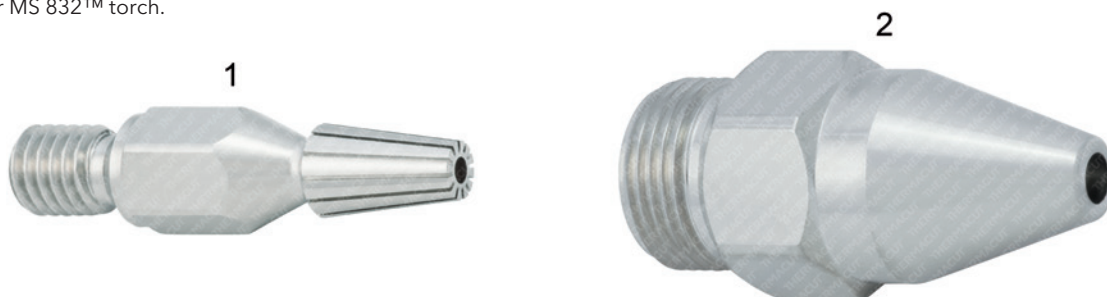
THESE PARTS ARE NOT INTERCHANGEABLE WITH OEM. THERMACUT HEATING NOZZLE AND THERMACUT CUTTING TIP MUST BE USED TOGETHER AS THE SET. PARTS ARE DIFFERENT COMPARED TO OEM.

VADURA® 1215-A

Description: high-speed two-piece nozzles for machine cutting.

Gases: Acetylene.

Suitable for MS 832™ torch.



Item	Part No.	Ref. No.	Description, plate thickness	Packing
1.	A-1230	716.15942	Nozzle 6 - 10 mm	5pcs
	A-1060	716.15943	Nozzle 10 - 25 mm	5pcs
	A-1061	716.15944	Nozzle 25 - 40 mm	5pcs
	A-1062	716.15945	Nozzle 40 - 60 mm	5pcs
	A-1063	716.15946	Nozzle 60 - 100 mm	5pcs
	A-1064	716.15947	Nozzle 100 - 150 mm	5pcs
2.	A-1065	716.15950	Heating Nozzle 3 - 150 mm	1pc

INTERCHANGEABLE WITH ASD™ CONSUMABLES FROM GCE®

Last update of this page: 22/01/2019. See Revision history for details.

THERMACUT®
THE CUTTING COMPANY

WWW.THERMACUT.CZ
TEL.: +420 556 423 418
SALES@THERMACUT.CZ

WWW.THERMACUT.DE
TEL.: +49 (0) 27 39 40 33 0
INFO@THERMACUT.DE

WWW.THERMACUT.COM
TEL.: 1-603-542-6715
CUSTOMERSERVICE@THERMACUT.COM

THERMACUT®, THE CUTTING COMPANY®, FHT-EX®, EX-TRAFIRE®, EX-TRACK® AND EX-TRABEAM® ARE REGISTERED TRADEMARKS OF THERMACUT, K.S. AND MAY BE REGISTERED IN CZECH REPUBLIC AND/OR OTHER COUNTRIES. ALL OTHER TRADEMARKS ARE PROPERTIES OF THEIR RESPECTIVE OWNERS. THERMACUT IS NO WAY AFFILIATED WITH MESSER®. MOST THERMACUT PARTS ARE MADE FOR OR BY AN IBG COMPANY.

VALID FROM JANUARY 2019 • PREVIOUS VERSION IS NO LONGER VALID. • © COPYRIGHT 2019 BY THERMACUT® CZECH REPUBLIC. ALL RIGHTS RESERVED.

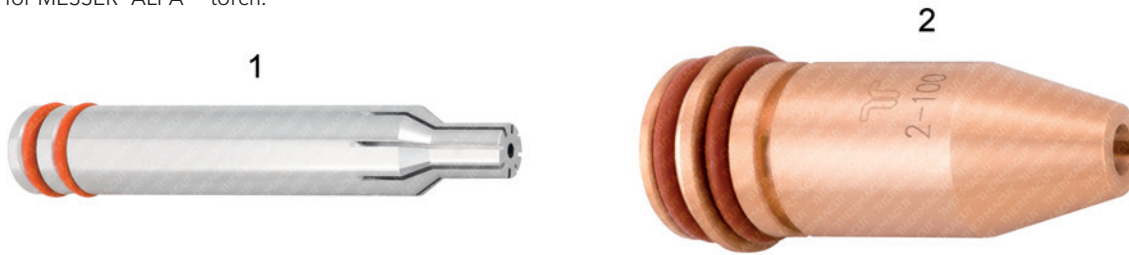
REPLACEMENT PARTS SUITABLE FOR MESSER® MODEL

VADURA® 1217

Description: two-piece standard cutting tip for cutting up to 100 mm.

Gases: Oxy-Acetylene.

Suitable for MESSER® ALFA™ torch.



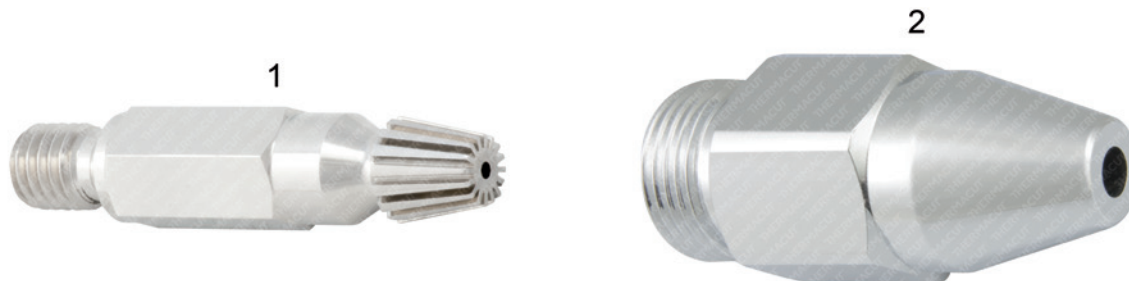
Item	Part No.	Ref. No.	Description, plate thickness	Packing
1.	A-1426	716.16543	Cutting Tip 10 - 25 mm	5pcs
	A-1427	716.16544	Cutting Tip 25 - 40 mm	5pcs
	A-1366	716.16545	Cutting Tip 40 - 60 mm	5pcs
	A-1428	716.16546	Cutting Tip 60 - 100 mm	5pcs
2.	A-1365	716.16320	Heating Nozzle 3 - 100 mm	1pc

GRICUT® 1230-PMYE

Description: two-piece standard cutting tip for cutting up to 100 mm.

Gases: Oxygen - propane, natural gas, mixed gases.

Suitable for MS 832™ torch.



Item	Part No.	Ref. No.	Description, plate thickness	Packing
1.	A-1282	716.15901	Cutting Tip 3 - 10 mm	5pcs
	A-1283	716.15902	Cutting Tip 7 - 15 mm	5pcs
	A-1235	716.15903	Cutting Tip 15 - 25 mm	5pcs
	A-1236	716.15904	Cutting Tip 25 - 40 mm	5pcs
	A-1237	716.15905	Cutting Tip 40 - 60 mm	5pcs
	A-1238	716.15906	Cutting Tip 60 - 100 mm	5pcs
2.	A-1281	716.15900	Heating Nozzle 3 - 100 mm	1pc

INTERCHANGEABLE WITH PSD™ AND PHD™ CONSUMABLES FROM GCE®

Last update of this page: 19/12/2018. See Revision history for details.

THERMACUT®
THE CUTTING COMPANY

WWW.THERMACUT.CZ
TEL.: +420 556 423 418
SALES@THERMACUT.CZ

WWW.THERMACUT.DE
TEL.: +49 (0) 27 39 40 33 0
INFO@THERMACUT.DE

WWW.THERMACUT.COM
TEL.: 1-603-542-6715
CUSTOMERSERVICE@THERMACUT.COM

THERMACUT®, THE CUTTING COMPANY®, FHT-EX®, EX-TRAFIRE®, EX-TRACK® AND EX-TRABEAM® ARE REGISTERED TRADEMARKS OF THERMACUT, K.S. AND MAY BE REGISTERED IN CZECH REPUBLIC AND/OR OTHER COUNTRIES. ALL OTHER TRADEMARKS ARE PROPERTIES OF THEIR RESPECTIVE OWNERS. THERMACUT IS NO WAY AFFILIATED WITH MESSER®. MOST THERMACUT PARTS ARE MADE FOR OR BY AN IBG COMPANY.

VALID FROM JANUARY 2019 • PREVIOUS VERSION IS NO LONGER VALID. • © COPYRIGHT 2019 BY THERMACUT® CZECH REPUBLIC. ALL RIGHTS RESERVED.

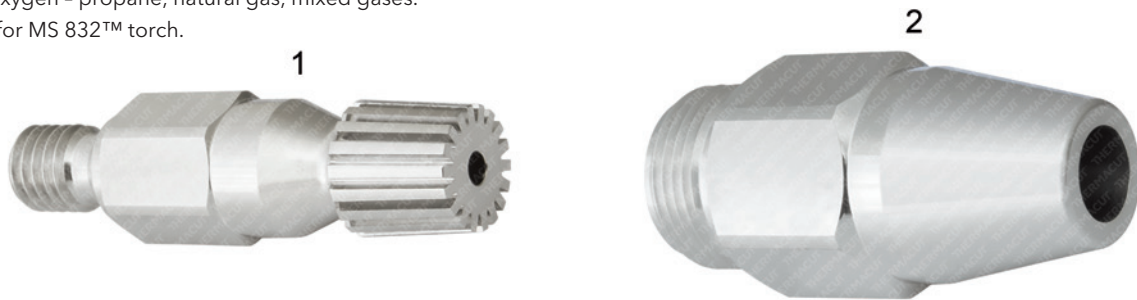
REPLACEMENT PARTS SUITABLE FOR MESSER® MODEL

GRICUT® 1280

Description: two-piece standard cutting tip for cutting above 100 mm.

Gases: Oxygen – propane, natural gas, mixed gases.

Suitable for MS 832™ torch.



Item	Part No.	Ref. No.	Description, plate thickness	Packing
1.	A-1337	716.15927	Cutting Tip 100 - 200 mm	5pcs
	A-1338	716.15928	Cutting Tip 200 - 250 mm	5pcs
	A-1339	716.15929	Cutting Tip 250 - 300 mm	5pcs
2.	A-1340	716.15931	Heating Nozzle 100 - 300 mm	1pc

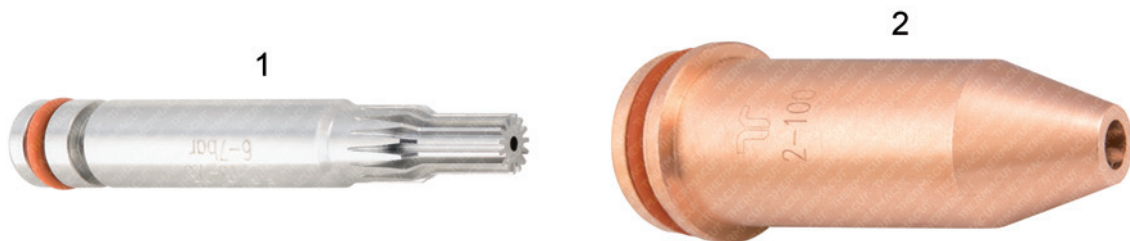
INTERCHANGEABLE WITH PSD™ CONSUMABLES FROM GCE®

GRICUT® 9230

Description: two-piece standard cutting tip for cutting up to 100 mm.

Gases: Oxygen – propane, natural gas, mixed gases.

Suitable for MS 932™ torch.



Item	Part No.	Ref. No.	Description, plate thickness	Packing
1.	A-1456	716.16551	Cutting Tip 3 - 10 mm	5pcs
	A-1457	716.16552	Cutting Tip 7 - 15 mm	5pcs
	A-1458	716.16553	Cutting Tip 15 - 25 mm	5pcs
	A-1459	716.16554	Cutting Tip 25 - 40 mm	5pcs
	A-1460	716.16555	Cutting Tip 40 - 60 mm	5pcs
	A-1461	716.16556	Cutting Tip 60 - 100 mm	5pcs
2.	A-1361	716.16550	Heating Nozzle 3 - 100 mm	1pc

THESE PARTS ARE NOT INTERCHANGEABLE WITH OEM. THERMACUT HEATING NOZZLE AND THERMACUT CUTTING TIP MUST BE USED TOGETHER AS THE SET. PARTS ARE DIFFERENT COMPARED TO OEM.

Last update of this page: 22/01/2019. See Revision history for details.

THERMACUT®
THE CUTTING COMPANY

WWW.THERMACUT.CZ
TEL.: +420 556 423 418
SALES@THERMACUT.CZ

WWW.THERMACUT.DE
TEL.: +49 (0) 27 39 40 33 0
INFO@THERMACUT.DE

WWW.THERMACUT.COM
TEL.: 1-603-542-6715
CUSTOMERSERVICE@THERMACUT.COM

THERMACUT®, THE CUTTING COMPANY®, FHT-EX®, EX-TRAFIRE®, EX-TRACK® AND EX-TRABEAM® ARE REGISTERED TRADEMARKS OF THERMACUT, K.S. AND MAY BE REGISTERED IN CZECH REPUBLIC AND/OR OTHER COUNTRIES. ALL OTHER TRADEMARKS ARE PROPERTIES OF THEIR RESPECTIVE OWNERS. THERMACUT IS NO WAY AFFILIATED WITH MESSER®. MOST THERMACUT PARTS ARE MADE FOR OR BY AN IBG COMPANY.

VALID FROM JANUARY 2019 • PREVIOUS VERSION IS NO LONGER VALID. • © COPYRIGHT 2019 BY THERMACUT® CZECH REPUBLIC. ALL RIGHTS RESERVED.